



DALARNA
UNIVERSITY

FACTS IN NUMBERS

DALARNA UNIVERSITY 2010



DALARNA UNIVERSITY

Dalarna University was founded in 1977, but its history began much earlier than that. In 1819, Fahlbergsskolan — the first college of civil engineering in the country — opened its doors, followed in 1875 by the teacher education college. In 1894, the nursing college was established.

Today, the university offers a range of educational opportunities. In 2010, there were 65 programmes at both the first-cycle and the second-cycle levels. Research is profiled and is currently being developed in close collaboration with local industry and business.

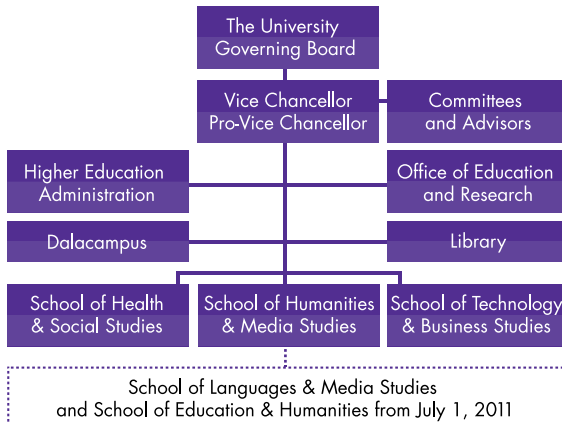
Since the year 2000, the university has developed a selection of courses in 11 languages, which makes its language department unique within Sweden. The number of web-based distance learning courses has been increasing year after year.

In 2010, 18 programmes were offered at the second-cycle level whereas the number of courses stood at 1 234.

THE UNIVERSITY'S ORGANIZATIONAL STRUCTURE

The university is headed by a university board designated by the Swedish Government. The Vice Chancellor is Marita Hilliges. From July 1, 2011, there will be four schools rather than the present-day three. The School of Technology and Business Studies is located in Borlänge and the other schools in Falun. University management is located in Falun.

Organizational Structure



THE STUDENTS

The number of students at the university in 2010 sat at 18 063. Of these, 11 831 (about 65%) chose web-based distance education and 6 232 (about 35%) chose campus-based education.

The number of full-time students (that is to say, the number of individuals calculated on a full-time basis) amounted to 7 256.

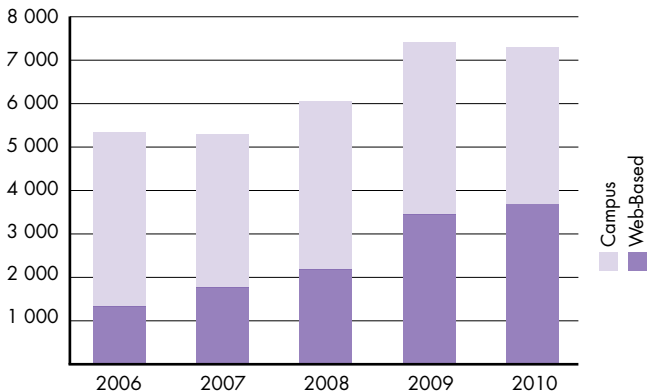
In 2010, 380 international students were first-time registrants in a Dalarna University programme, a decrease of 26% compared with 2009. This comes as a result of the student fees that will be introduced in the autumn of 2011. The number of incoming exchange students was 439, whereas the number of outgoing was 41.

Education offered by the university covers a number of fields, such as teacher education, humanities, sport, law, media, medicine, science, social studies, engineering, and healthcare. The number of programme students has continued to increase. Currently, 55% of students are registered in programmes whereas 45% are registered in courses. The number of graduates was 1 141.

The Student Union of Dalarna (Dalarnas studentkår) is in charge

of the running of the union at the university and is a cooperative partner in ensuring that students' views are heard. The union also appraises the level and quality of education.

Diagram 1: Number of Full-Time Equivalent Students 2006–2010



EXTERNAL COLLABORATION

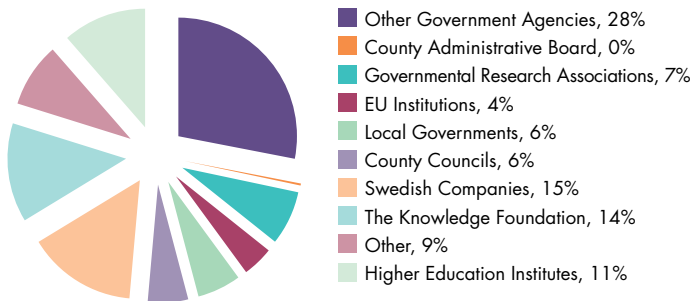
Dalarna University maintains comprehensive collaboration with external organizations such as local government, county councils, and businesses. There are distinctive organizations at the university that support this collaboration. Educational planning, professional development, and organizational development with support from contributions from Research and Development (FoU) are just some important areas of collaboration. Others are to identify business ideas and to work with networks, clusters, and innovative systems.

At the first-cycle level, the university has various exchange programmes with partner universities throughout the world. There is collaboration also within second-cycle courses when students spend time at two or more institutions of higher education. The university is active in seven graduate schools as well as in the graduate school for metalworking (Nationella forskarskolan för Bearbetningsteknik), the development of which Dalarna University initiated.

The university's research is mainly applied research, and its aim is to develop an especially close collaborative partnership with business and industry as well as other key representatives in the community at large. A particular goal that has been expressed is

to increase external financing. There is a network system with a number of institutions of higher education both in and outside Sweden.

Diagram 2: Financial Contributors 2010, 58.4 million kronor



RESEARCH

Rather than expand its number of research areas, the university has chosen to profile. Between 2012 and 2015, a new strategy for research will be implemented whereby most research funding will be allocated to these six strategic areas:

- Complex Systems – Microdata Analysis
- Culture, Identity and Representation
- Education and Learning
- Energy Transition and Societal Processes
- Health and Social Welfare
- Steel Forming and Surface Engineering

In total, 98 million Swedish kronor was put towards research in 2010.

In 2010 the university established its Master's Programme in Steel Forming and Surface Engineering, and was granted examination rights at the Master's level for Microdata Analysis. Together, these are important steps towards the university having its own third-cycle programmes.

FINANCIAL INFORMATION

Diagram 3: Income 2010, 589.9 million kronor

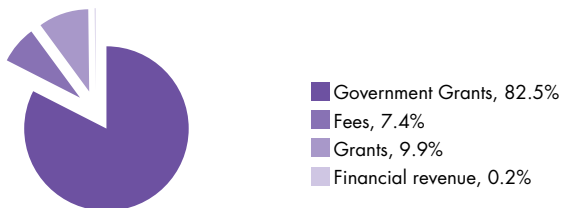
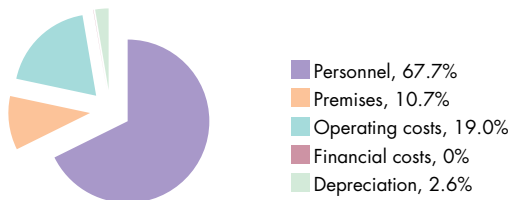


Diagram 4: Expenses 2010, 524.0 million kronor



PERSONNEL

The number of employees at the end of 2010 was 733, an increase of 67 from the previous year. The main increase (53) was in the number of teachers. The total number of teaching staff was 485, of whom 35 were professors, 142 senior lecturers, 291 lecturers, and 17 teachers.

The university aims to recruit more associate professors and senior lecturers in key fields, for example engineering, teacher education, and health sciences.

The average age of personnel decreased marginally between 2009 and 2010, and now sits at 47.0 years (47.9 in 2009). Generally, the university has a fairly equal number of male and female employees: women make up 54% of the workforce and men 46%, the same figures as for 2009. The number of full-time employee equivalents is 580.

**Table 1: Total number of employees
(full-time employee equivalents, category)**

Category	2008		2009		2010	
	Man-year	Percent	Man-year	Percent	Man-year	Percent
Professors	19.6	3.9	21.4	4.0	23.0	4.0
Senior Lecturers	94.2	18.5	97.1	18.0	108.4	18.7
Lecturers	188.4	37.1	199.6	37.0	215.0	37.1
Other Teaching Staff	6.9	1.4	5.3	1.0	6.0	1.0
Doctoral Students	26.3	5.2	27.4	5.1	30.2	5.2
Other Researchers	12.9	2.5	18.7	3.5	20.7	3.6
Administrative Staff	104.1	20.5	114.8	21.3	120.9	20.8
Technical Staff	40.9	8.0	41.1	7.6	40.2	6.9
Library Staff	14.9	2.9	14.6	2.7	15.7	2.7
Total	508.2	100.0	540.0	100.0	580.1	100.0

CONTACT INFORMATION

Högskolan Dalarna

791 88 Falun

Sweden

Phone: +46 23 77 80 00

www.du.se

du.se